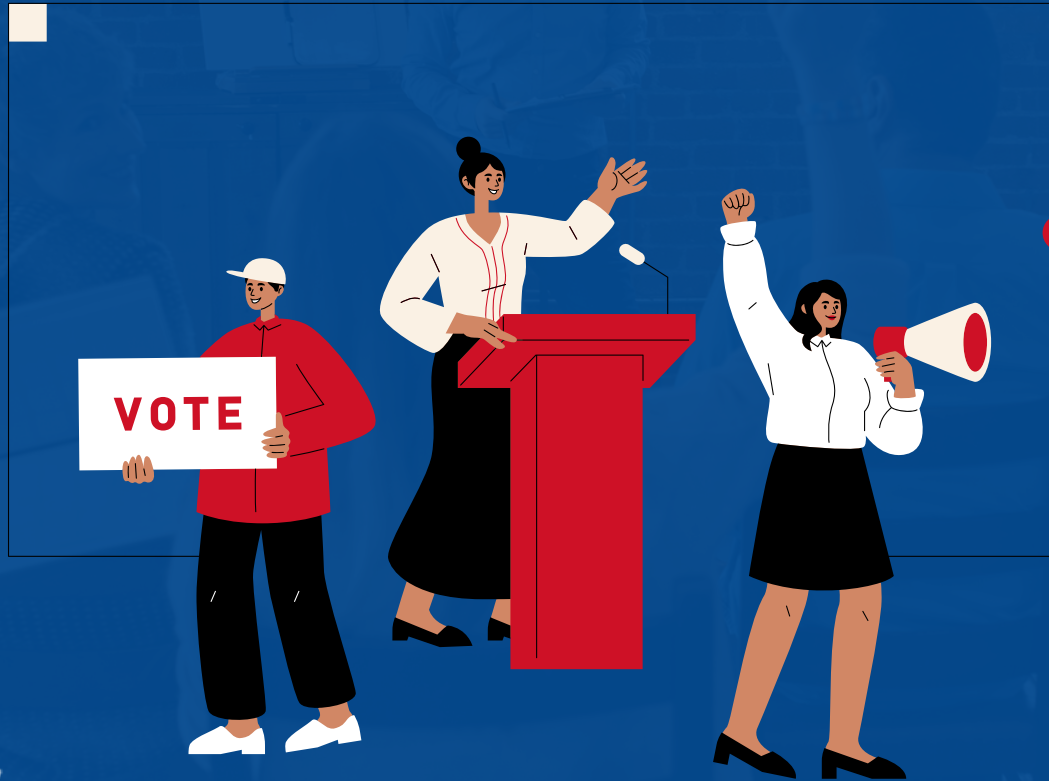


# CHILD CARE AWARE OF MINNESOTA'S ADVOCACY NETWORK VOTER EDUCATION TOOLKIT



**ChildCare**  
**Aware**  
OF MINNESOTA

# When is the next election?



**AUG 9TH: PRIMARY ELECTION**



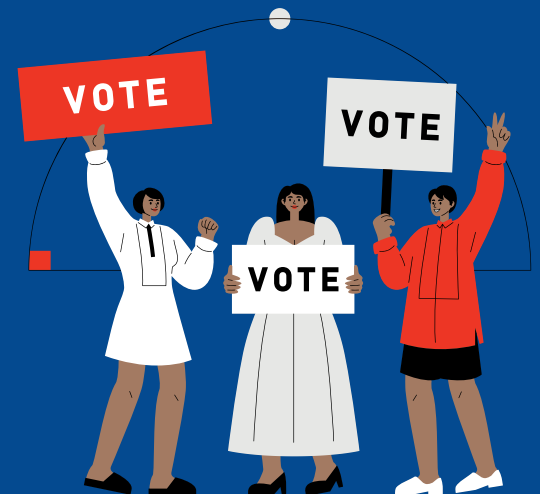
**SEP 23RD- NOV 7TH: VOTE BY MAIL OR IN PERSON**



**OCT 18TH: REGISTER IN ADVANCE TO SAVE TIME ON ELECTION DAY**



**NOV 8TH: ELECTION DAY**



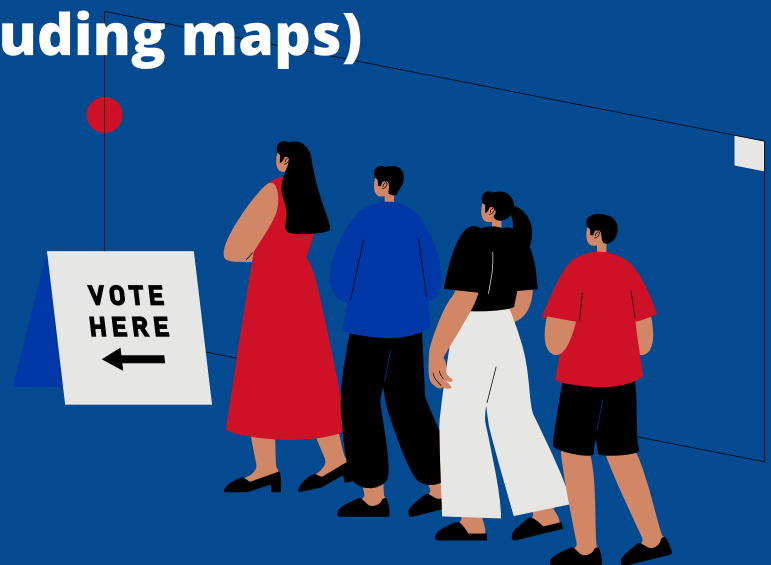
# Where do I vote?

Enter your address into this Polling Place Finder

<https://pollfinder.sos.state.mn.us/>

Here you will find important voting information for your precinct, including:

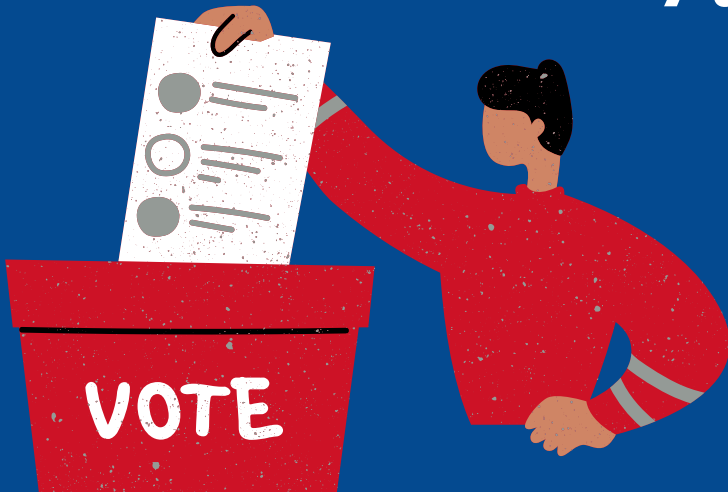
- **Your Polling Place (where you vote, map & directions)**
- **Districts for your precinct (including maps)**
- **Candidates on your ballot**



# What are the hours for voting?

**State and federal elections  
7 a.m.\* - 8 p.m.**

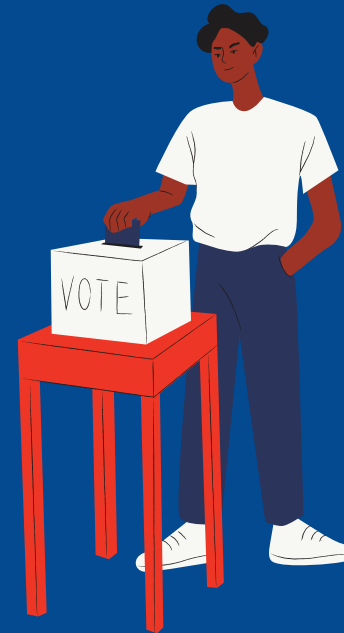
**City, town and school-only elections  
7 a.m. - 8 p.m.**



**\*In state and federal elections, towns with less than 500 registered voters are not required to open until 10 a.m. but most choose to open at 7 a.m.**

# How do I vote?

**There are many ways to get help when you vote. You can bring someone to help, ask an election judge, use a machine to help you mark your ballot or even vote from your car.**



**Check out the  
Voter Assistance Guide:  
<https://www.sos.state.mn.us/media/4703/voter-assistance.pdf>**

# What are other ways to vote?

**In Minnesota, you can vote early with an absentee ballot starting 46 days before Election Day. You can request an absentee ballot online for federal, state, and county elections.**



**Check out the link below for other options to vote:**

**<https://www.sos.state.mn.us/elections-voting/other-ways-to-vote/>**

# What ID do I need to vote?

- ① **ID with current name and address**
- ② **Photo ID and a document with current name and address**
- ③ **Registered voter who can confirm your address**
- ④ **College student ID with housing list**
- ⑤ **Valid registration in the same precinct**



# What ID do I need to vote?

- ⑥ Notice of Late Registration
- ⑦ Staff person of a residential facility

**Have questions? Check out the Election Day  
Registration Guide below:**

**[https://www.sos.state.mn.us/  
media/4693/election-day-  
registration.pdf](https://www.sos.state.mn.us/media/4693/election-day-registration.pdf)**





# Where can I learn more about early childhood issues this year?

- **Child Care Aware of MN:**  
<https://www.childcareawaremn.org/community/policy-legislation/>
- **Think Small:** <https://thinksmallblog.org/>
- **CARE Fellowship Facebook Page:**  
<https://www.facebook.com/groups/252856330341016>

